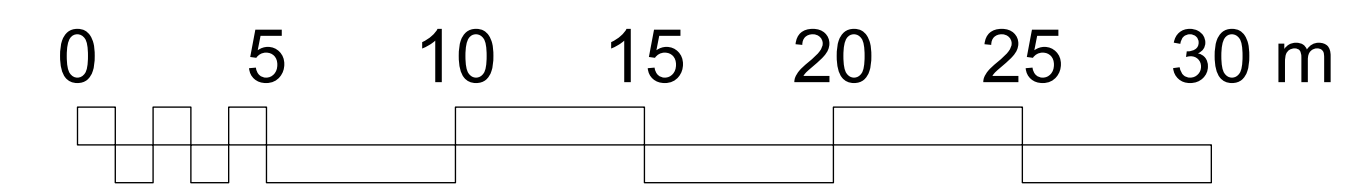




- 1 RESTORATION AND ENHANCEMENT AREA. GRADES TO BE MAINTAINED IN THIS AREA. REMOVE POPLAR, SILVER MAPLE TREES AND SAPLINGS. REMOVE INVASIVE PLANT SPECIES. RETAIN EXISTING NATIVE TREES AND SHRUBS AT DIRECTION OF PROJECT ARBORIST AND LANDSCAPE ARCHITECT. INTERPLANT WITH NATIVE TREES AND SHRUBS.
- 2 ALL TREES TO BE REMOVED IN THESE AREAS TO FACILITATE NEW GRADING. THIS AREA IS A FILL AREA WITH UNSUSTAINABLE SLOPES.
- 3 PATHWAY NODE COMPLETE WITH SEATING BENCH, GARBAGE RECEPTACLE AND BIKE PARKING (8). FIXTURES TO BE REVIEWED AND APPROVED BY CITY OF NANAIMO.

**Millstone Waterfront Development
L1 - Landscape Plan**
FOR PERMIT DATE: 2022.12.13



Murdoch de Greeff INC
Landscape Planning & Design

200 - 524 Cuckwilt Road
Victoria, BC V8L 1G1

Phone: 250.412.2891
Fax: 250.412.2892

RECEIVED
DP1292
2022-DEC-14
Current Planning

BOURFRONT

- 1 FUTURE PATHWAY CONNECTION.
- 2 RESTORATION AND ENHANCEMENT AREA. GRADES TO BE MAINTAINED IN THIS AREA. REMOVE POPLAR, SILVER MAPLE TREES AND SAPLINGS. REMOVE INVASIVE PLANT SPECIES. RETAIN EXISTING NATIVE TREES AND SHRUBS AT DIRECTION OF PROJECT ARBORIST AND LANDSCAPE ARCHITECT. INTERPLANT WITH NATIVE TREES AND SHRUBS.
- 3 VIEW CORRIDOR. USE LOWER GROWING NATIVE SPECIES TO PRESERVE VIEWS TO MILLSTONE RIVER.
- 4 PEDESTRIAN BRIDGE OVER RAIN GARDEN OUTLET CHANNEL PROVIDES VIEWING OPPORTUNITIES TO RAIN GARDEN, HIGHWAY BRIDGE AND THE MILLSTONE RIVER.
- 5 RAIN GARDEN AREA TO TREAT STORMWATER FROM MILLSTONE CRESCENT.
- 6 ALL TREES TO BE REMOVED IN THESE AREAS TO FACILITATE NEW GRADING. THIS AREA IS A FILL AREA WITH UNSUSTAINABLE SLOPES.
- 7 BOULEVARD TREES AND LANDSCAPE TREATMENT TO BE DETERMINED DURING DP OF ADJACENT BUILDINGS / STREETScape.

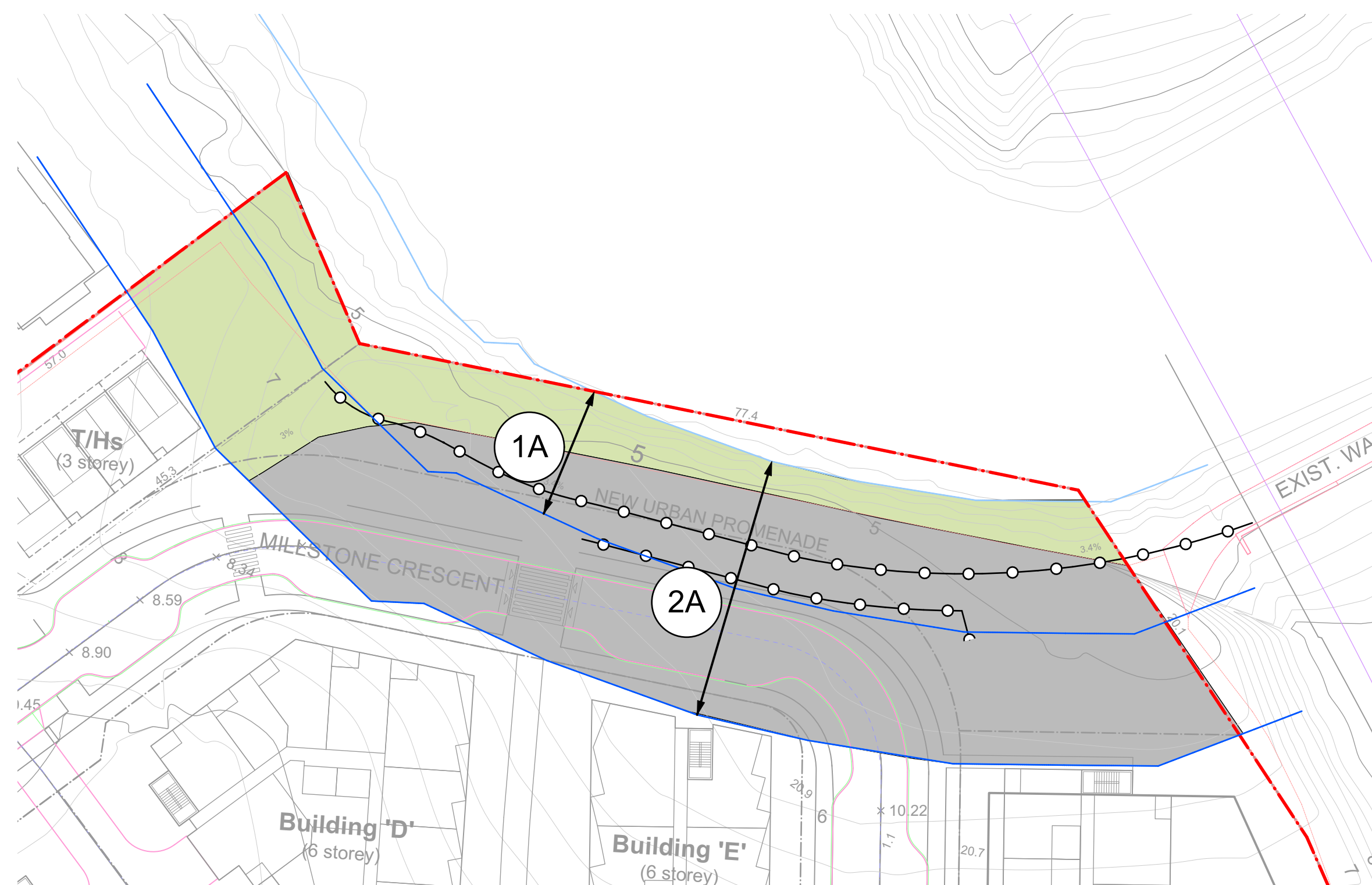
PLANT LIST				
Sym	Qty	Botanical Name	Common Name	Sched. Size / Plant Spacing
TREES:				
ACC	13	Acer circinatum	Vine Maple	1.8m, 1.5 width
ACM	3	Acer macrophyllum	Bigleaf Maple	2.5 m b&b
CNP	1	Chamaecyparis nootkatensis 'Pendula'	Nootka False Cypress	2.5 m ht
CD	2	Crataegus douglasii	Black Hawthorn	2m height, b&b
MS	6	Malus fusca	Pacific Crabapple	#10 pot, Min 1.2m ht
PCC	4	Pinus contorta var. contorta	Shore Pine	2.5m b&b, irregular
PS	15	Pseudotsuga menziesii	Douglas Fir	1.5m, #15 pot
RHP	13	Rhamnus purshianus	Cascara	#5 pot
TSM	1	Tsuga heterophylla	Western Hemlock	2.5m, b&b
SHRUBS:				
Ami	23	Achillea millefolium	Yarrow	#1 pot
Ana	15	Aster novae-angliae	New England Aster	#1 pot
Bs	44	Blechnum spicant	Deer Fern	#1 pot
Co	182	Carex obnupta	Slough Sedge	#1 pot
Csc	93	Cornus sericea	Red-twig Dogwood	Stake
Erl	51	Eriophyllum lanatum	Woolly Sunflower	#1 pot
Gsh	1548	Gaultheria shallon	Salal	#1 pot
Hd	30	Holodiscus discolor	Oceanspray	#1 pot
Jcg	273	Juncus 'Carmin's Grey'	Soft Common Rush	Sp3
Lu	10	Lupinus latifolius	Broadleaf Lupine	#1 pot
Ma-1	150	Mahonia aquifolium	Oregon Grape	#1 pot
Mar	94	Mahonia repens	Prostrate Oregon Grape	#1 pot
Myc	10	Myrica californica	Pacific Wax Myrtle	#1 pot
Oc	5	Oemleria cerasiformis	Osoberry	#3 pot
Phc	16	Physocarpus capitatus	Pacific Ninebark	#3 pot
Pm	277	Polystichum munifolium	Sword Fern	#1 pot
Rs	144	Ribes sanguineum	Red Flowering Currant	#1 pot
Rn	274	Rosa nutkana	Nootka Rose	#1 pot
Rup	135	Rubus parviflorus	Thimbleberry	#1 pot
Ssw	74	Salix scouleriana	Scouler's Willow	whip
Sac	61	Scirpus acutus	Hard-stemmed Bulrush	Sp3
Sd	35	Spiraea douglasii	Hardhack	#1 pot
Sa	421	Symphoricarpos alba	Snowberry	#1 pot



Millstone Waterfront Development
L2 - Planting Plan
 FOR PERMIT DATE: 2022.12.13



200 - 524 Corduff Road
 Victoria, BC V8L 1G1
 Phone: 250.412.2891
 Fax: 250.412.2892
RECEIVED
DP1292
2022-DEC-14
 Current Planning

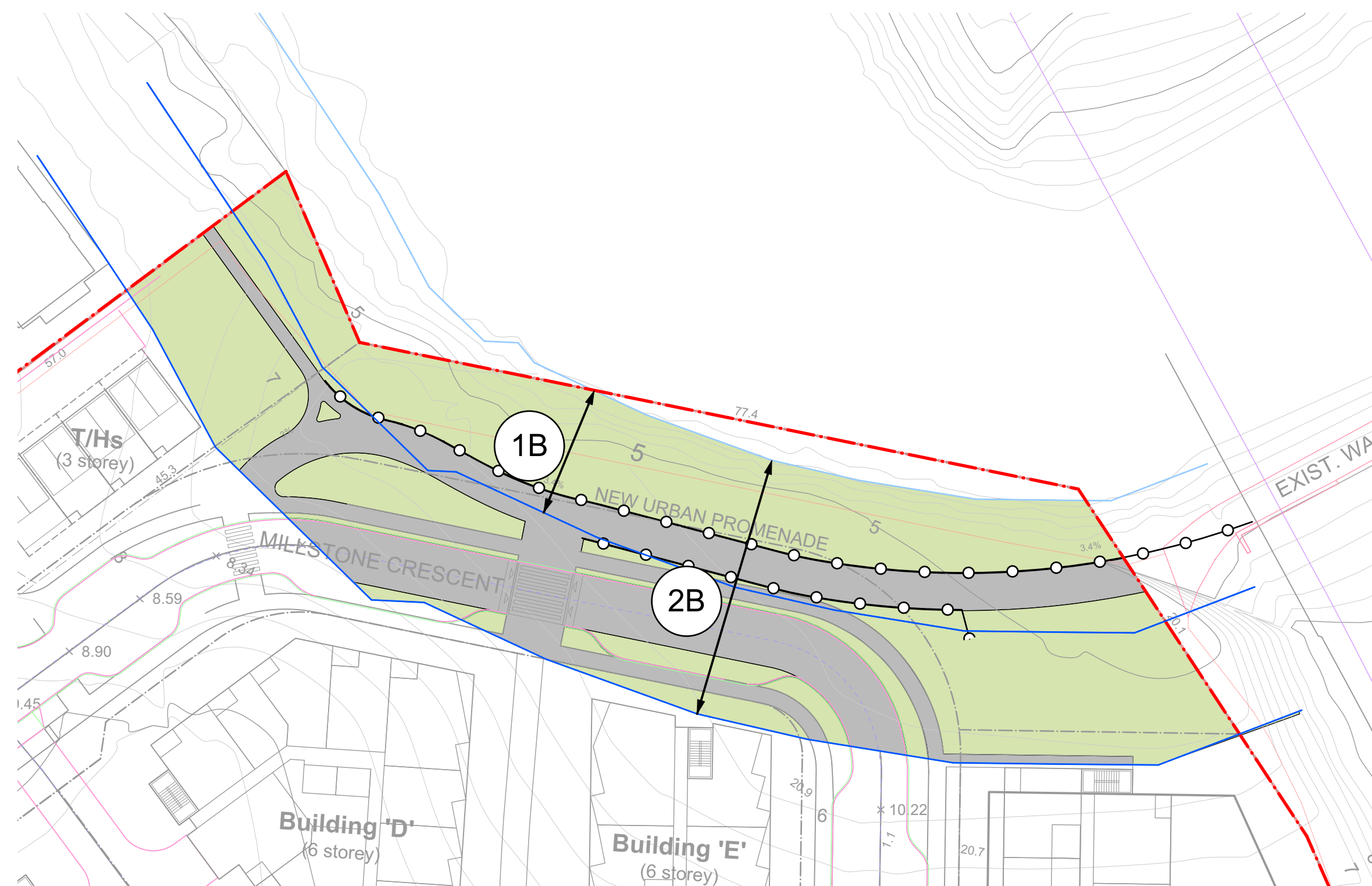


EXISTING CONDITIONS (1A)

15m Setback:
 - 789 m² impervious
 - 626 m² pervious

EXISTING CONDITIONS (2A)

30m Setback:
 - 2440 m² impervious
 - 1030 m² pervious



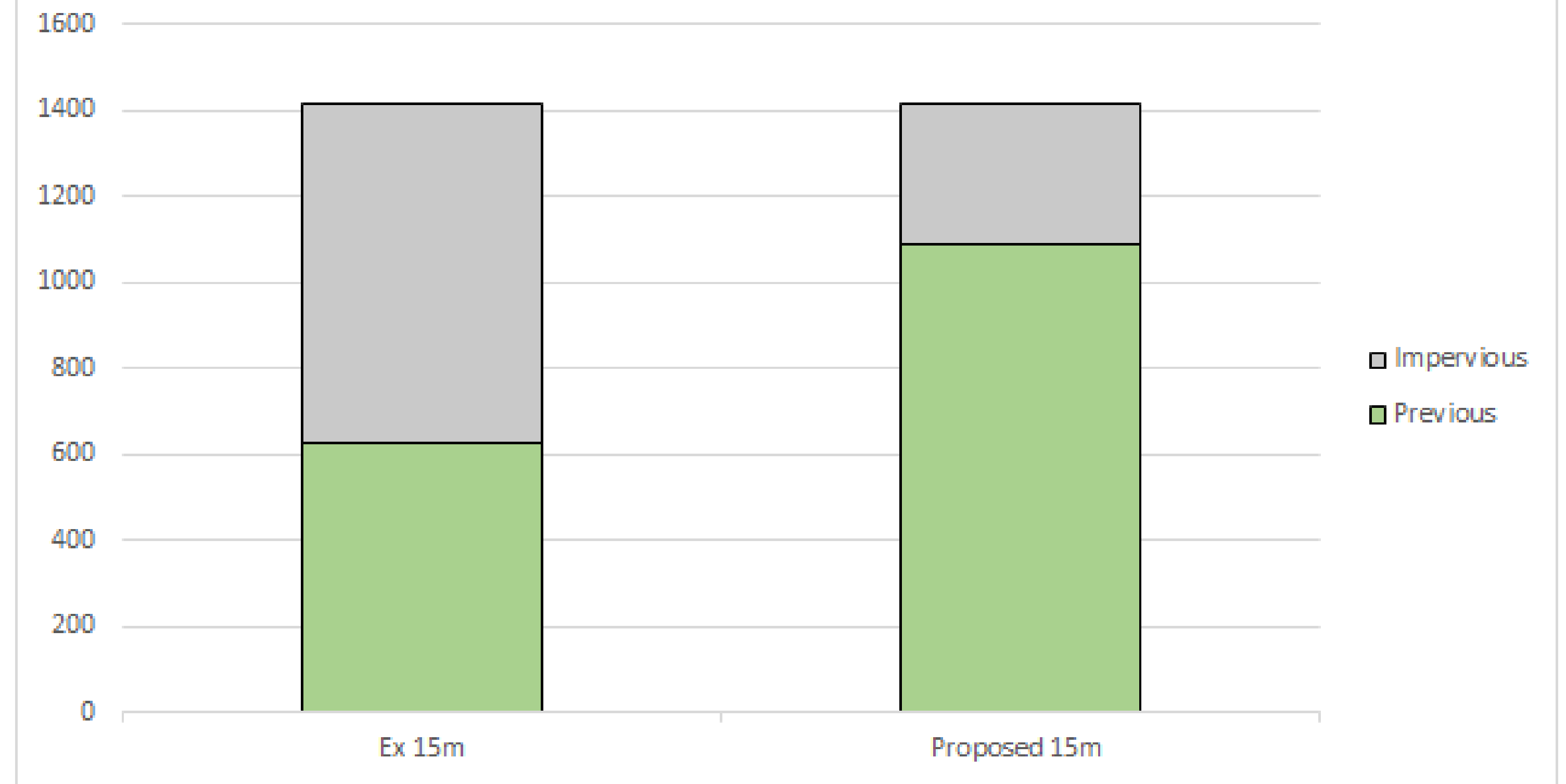
PROPOSED (1B)

15m Setback:
 - 325m² impervious
 - 1090m² pervious

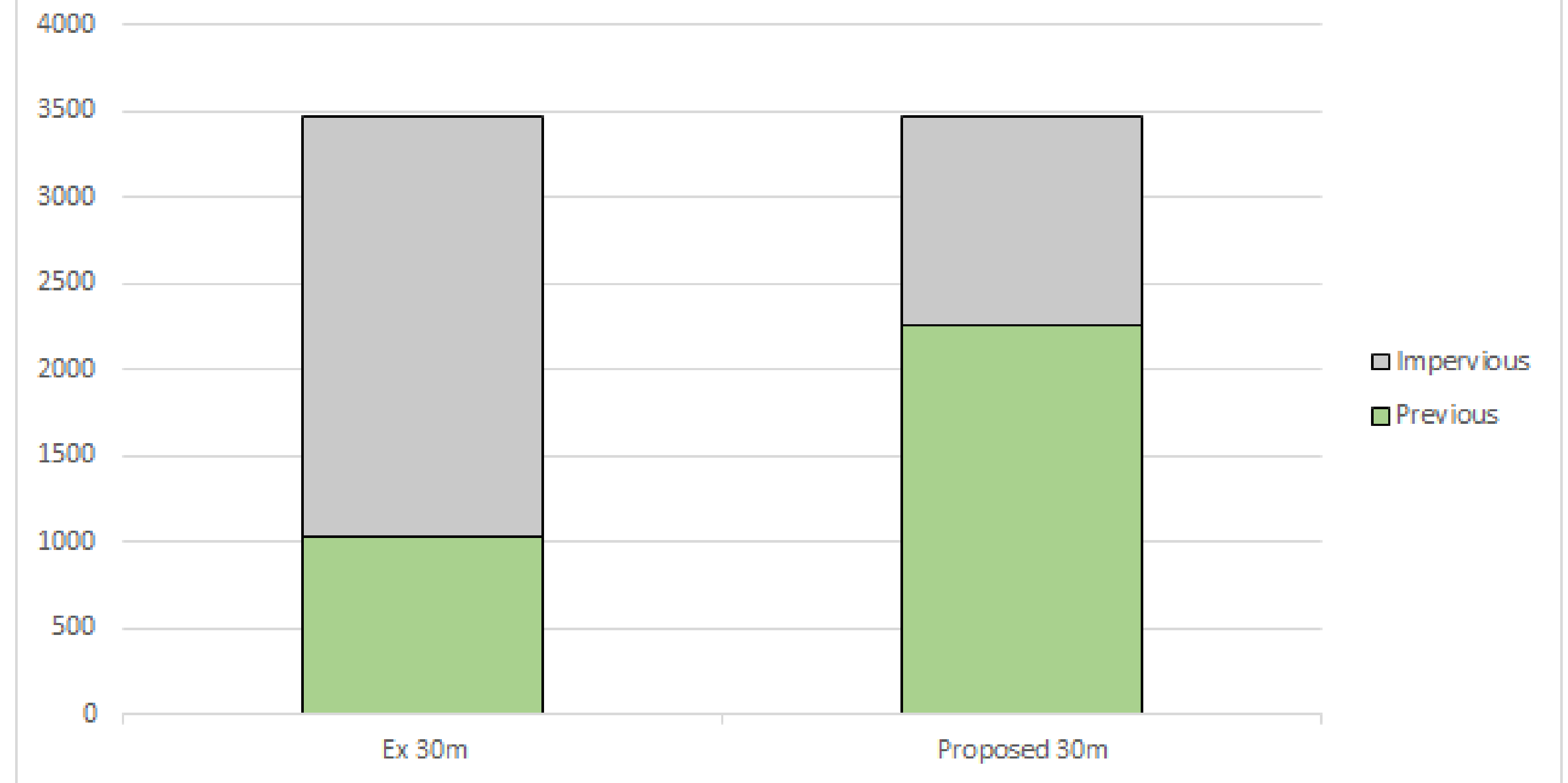
PROPOSED (2B)

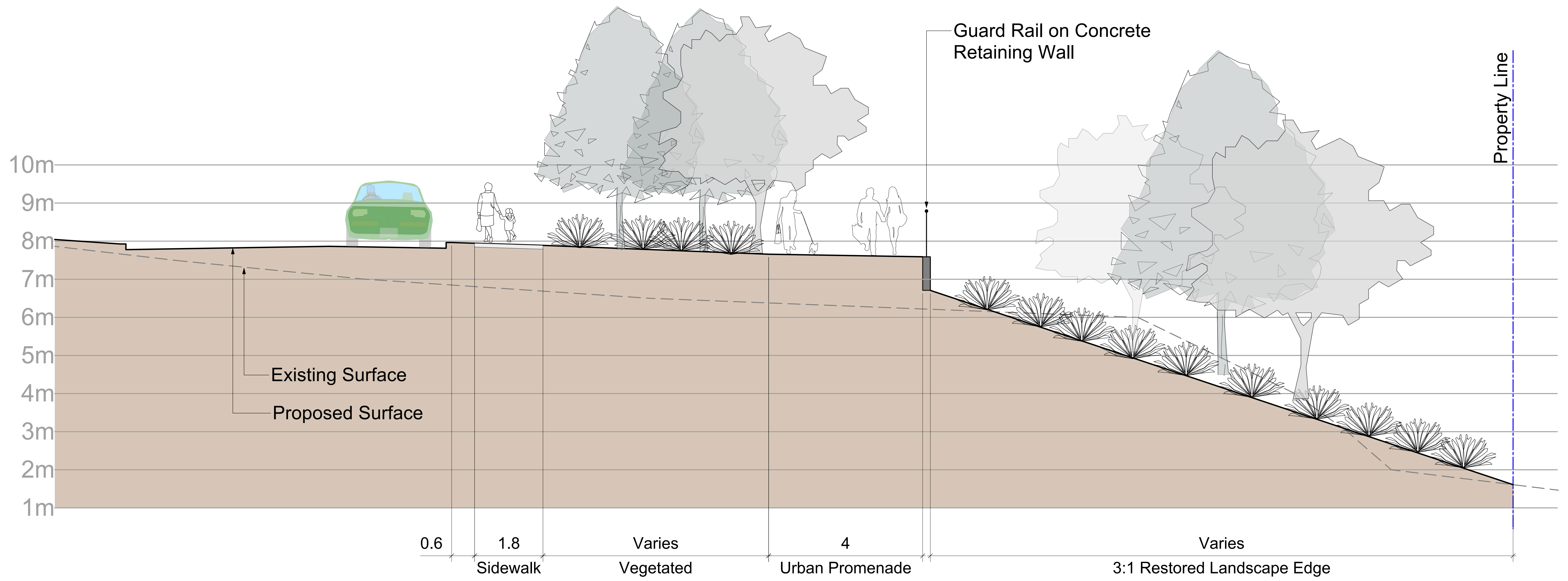
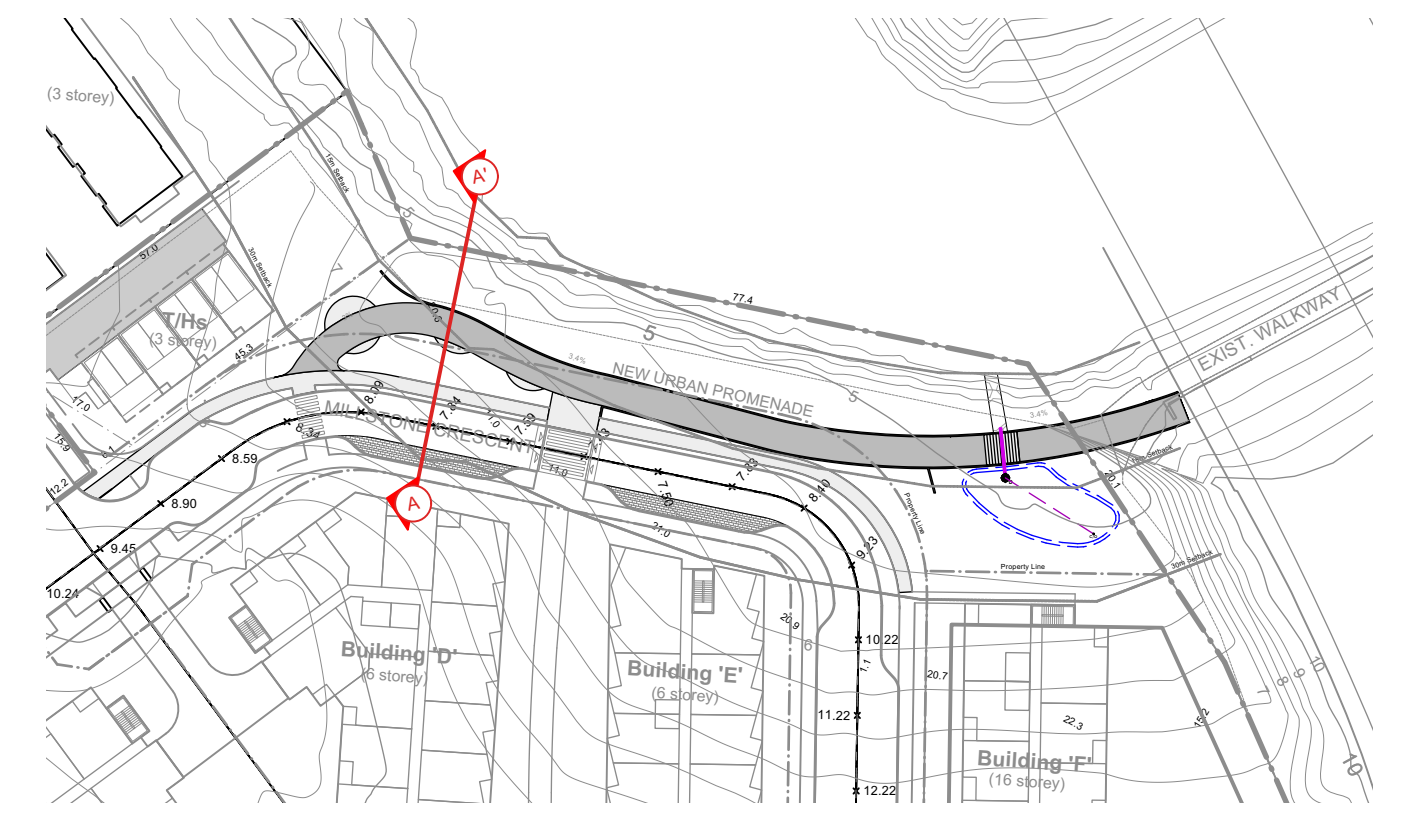
30m Setback:
 - 1210m² impervious
 - 2260m² pervious

15m Setback Pervious vs Impervious



30m Setback Pervious vs Impervious





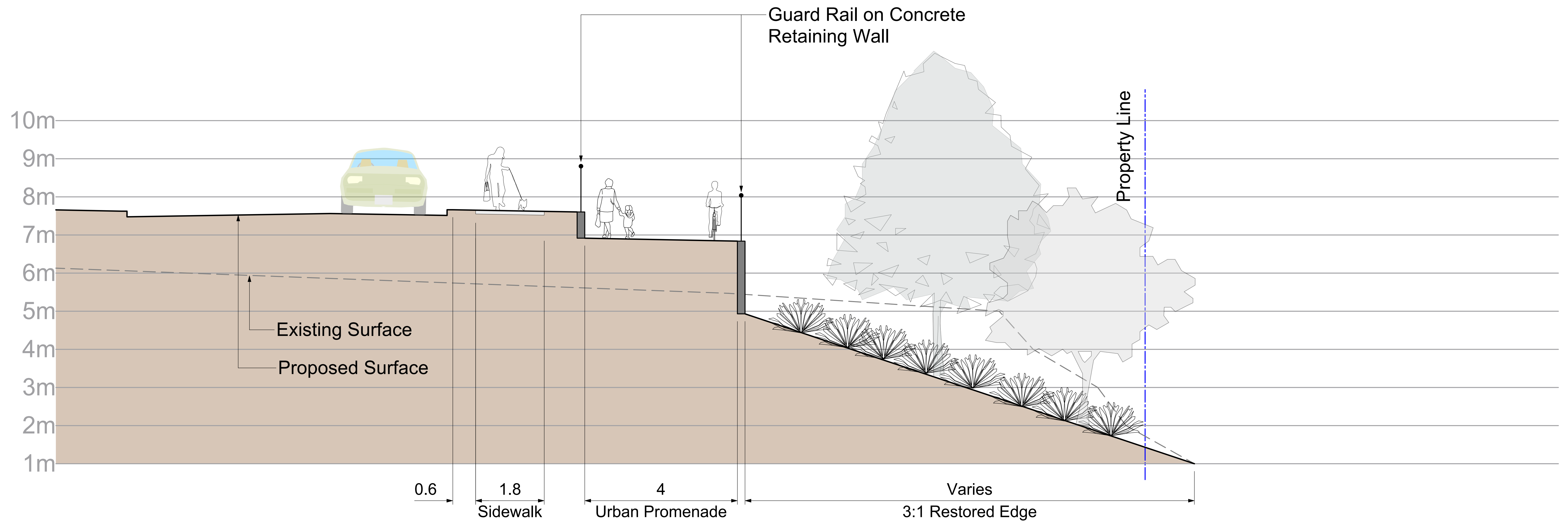
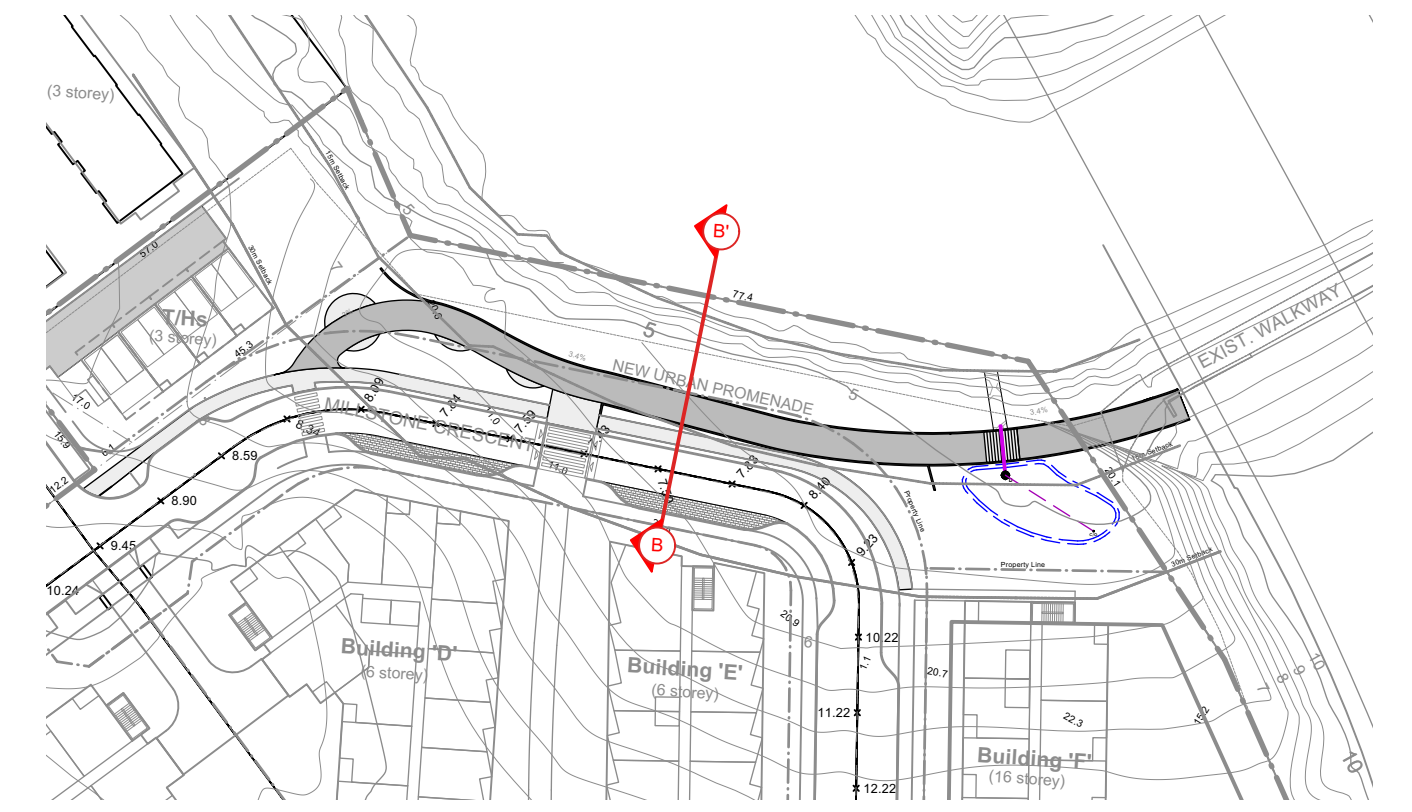
Millstone Waterfront Development
L4 - Section A
 FOR PERMIT DATE: 2022.12.13

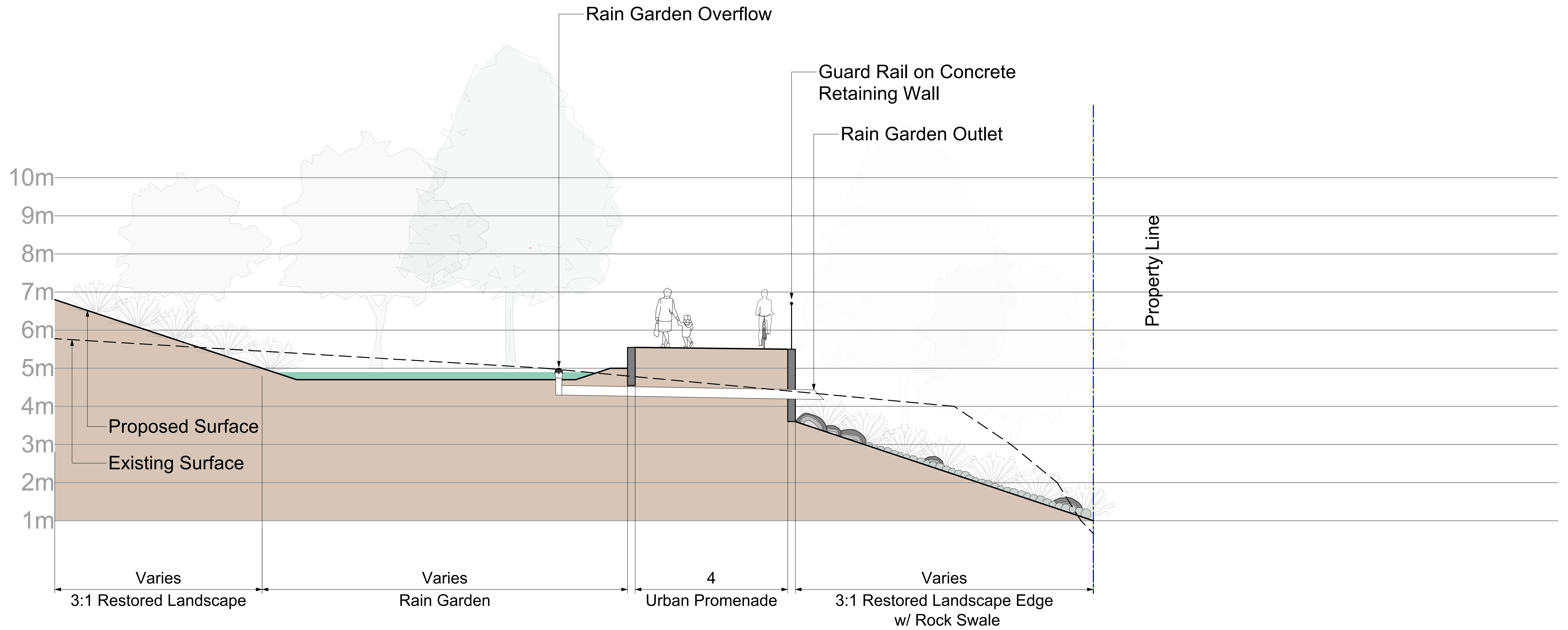
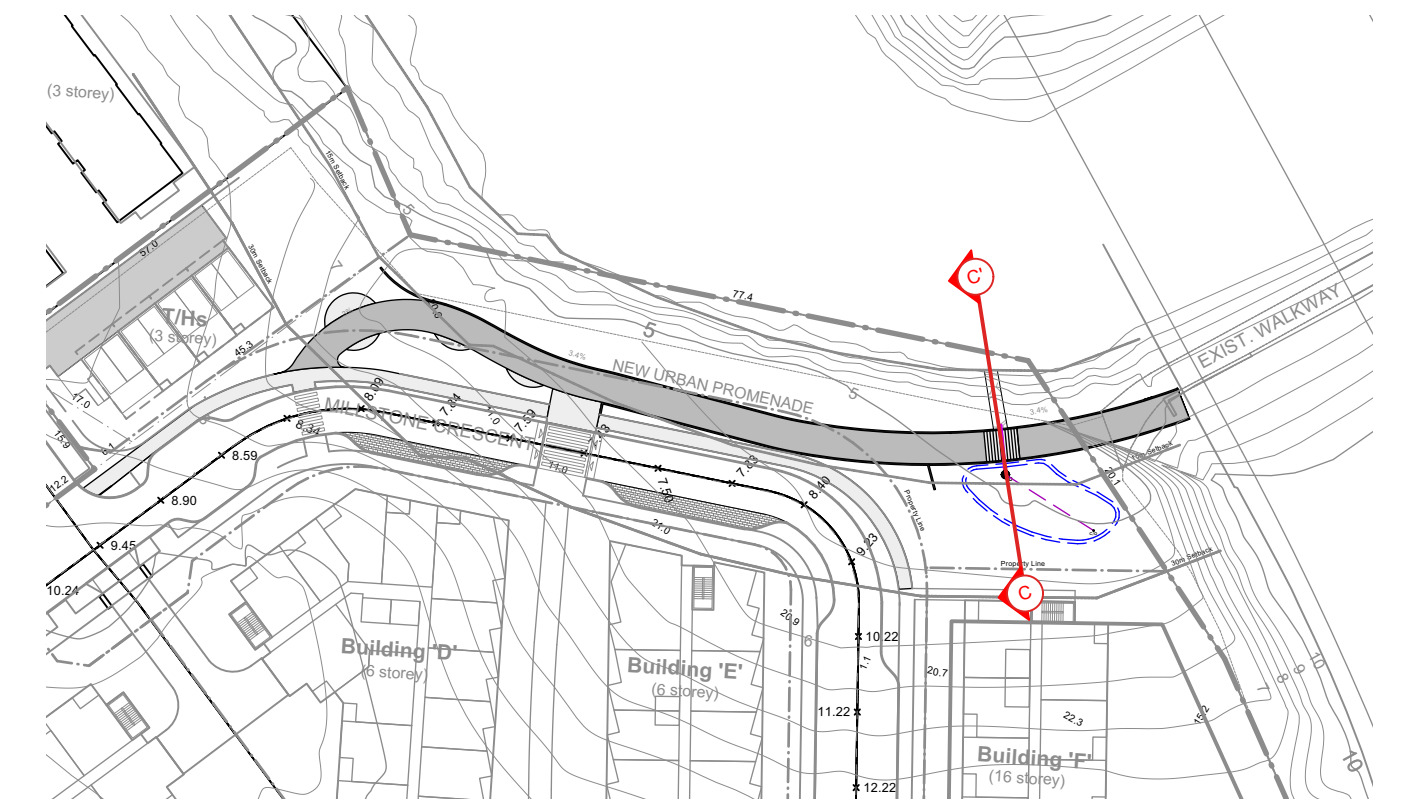
Murdoch de Greeff INC
 Landscape Planning & Design

200 - 524 Cuduhill Road
 Victoria, BC V8E 1G1

Phone: 250.412.2891
 Fax: 250.412.2892

RECEIVED
 DP1292
 2022-DEC-14
 Current Planning





**Millstone Waterfront Development
Section C**

FOR PERMIT DATE: 2022.12.13

Murdoch de Greeff INC
Landscape Planning & Design

200 - 524 Columbia Road
Victoria, BC V8Z 1G1

Phone: 250.412.2891
Fax: 250.412.2892

RECEIVED
DP1292
2022-DEC-14